

# “Trackside” Classroom

## *Lime Rock Turn by Turn*



## ***Disclaimer***

*The techniques shown here have been compiled from experienced sources believed to be reliable and to represent the best current opinions on driving on track. But they are advisory only. Driving at speed at Lime Rock, or any other track, requires skill, judgment and experience. These techniques assume the reader has high performance driving knowledge and applies them as applicable to their level of driving experience.*

*High-performance driving can be very dangerous, carries inherent risks and may result in injury or death. NNJR and PCA make no warranty, guarantee or representations as to the absolute correctness or sufficiency of any representation contained herein. Nor can it be assumed that all acceptable safety measures are contained herein or that other or additional measures may not be required under particular or exceptional conditions or circumstances.*

**Passing Zone: Right Side Only**

**No Name Straight**



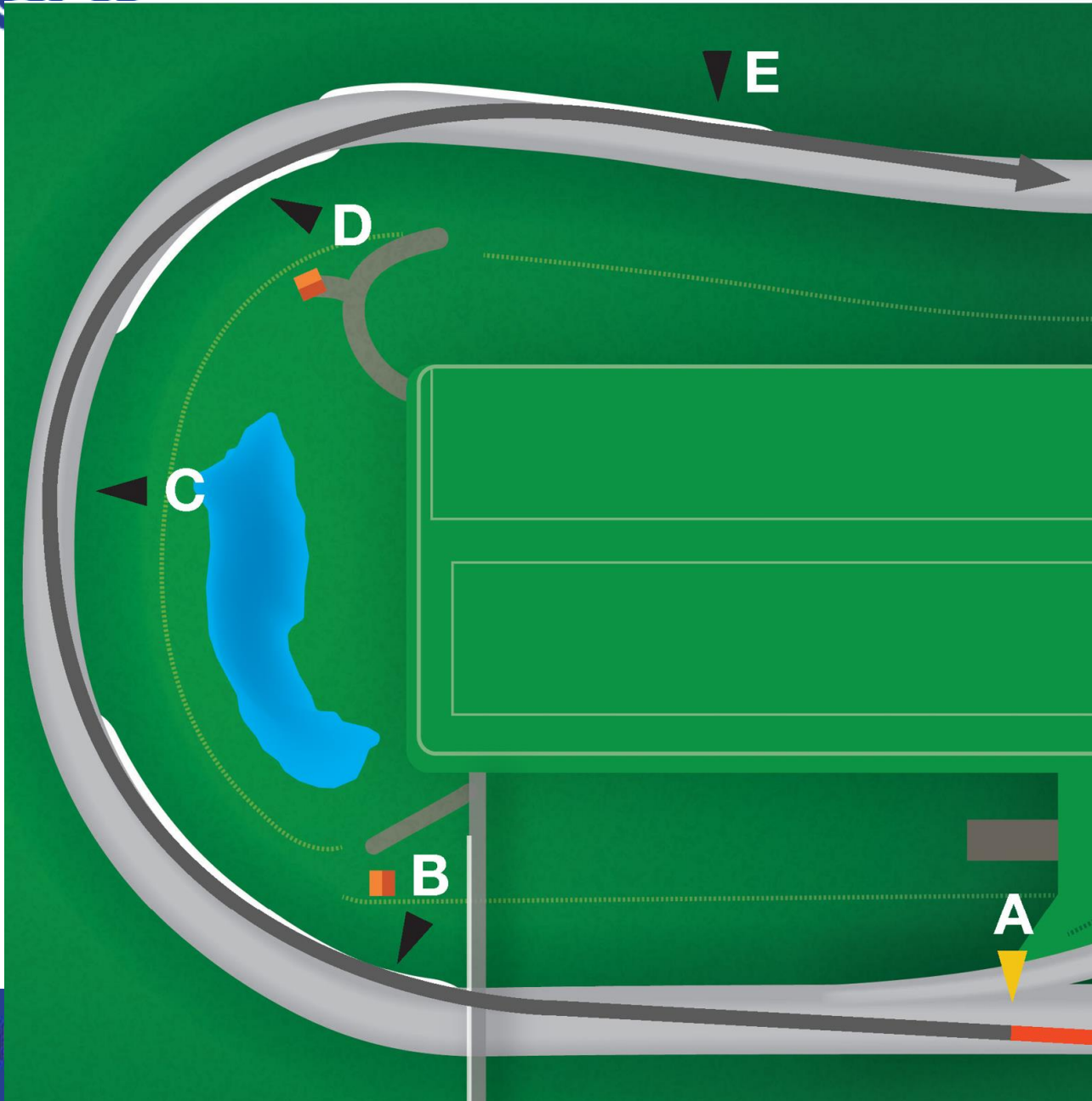
**Passing Zone: Right Side Only**

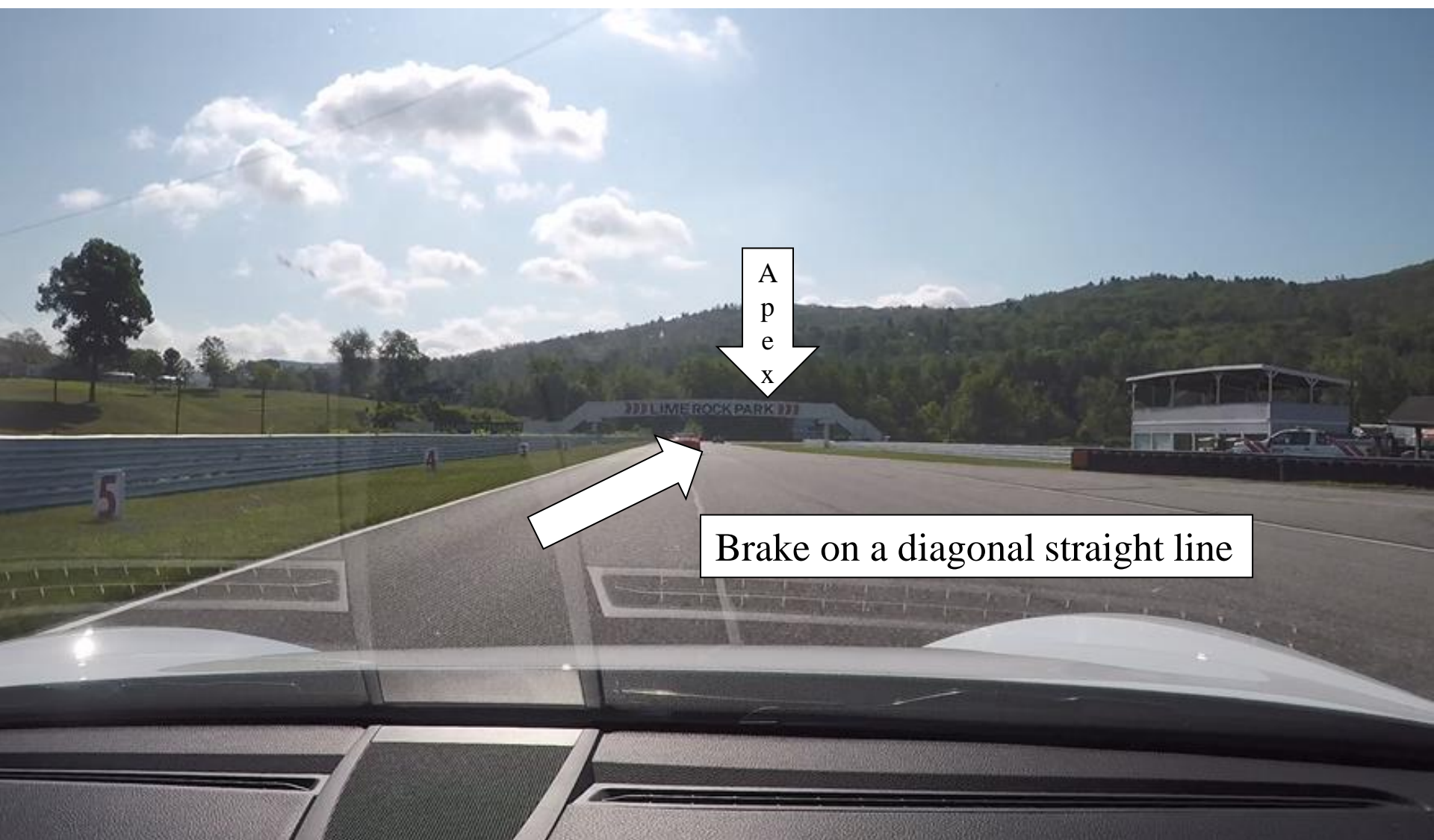
**Passing Zone: Either Side**

**No Passing**

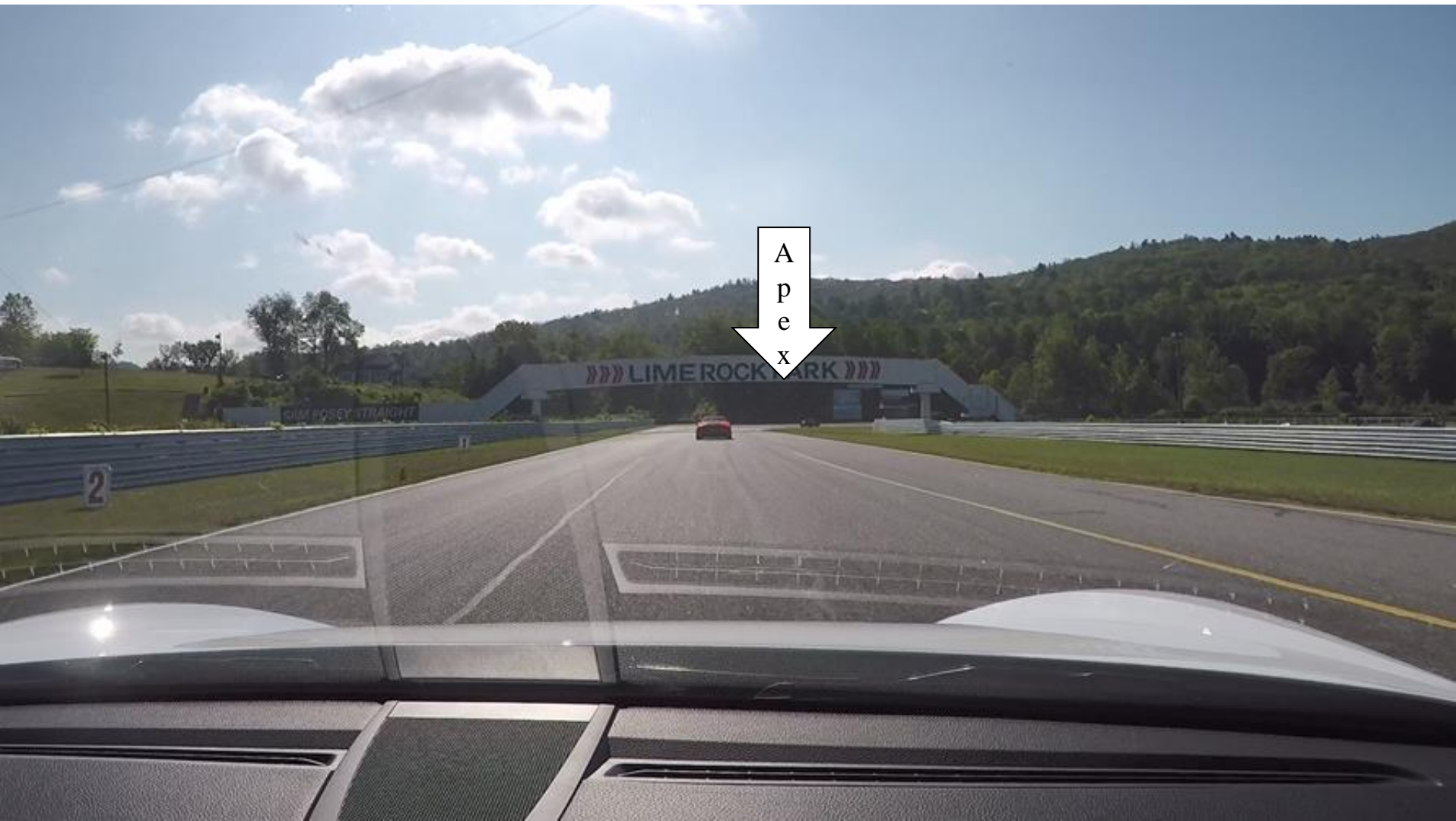
**Passing Zone: Right Side Only**











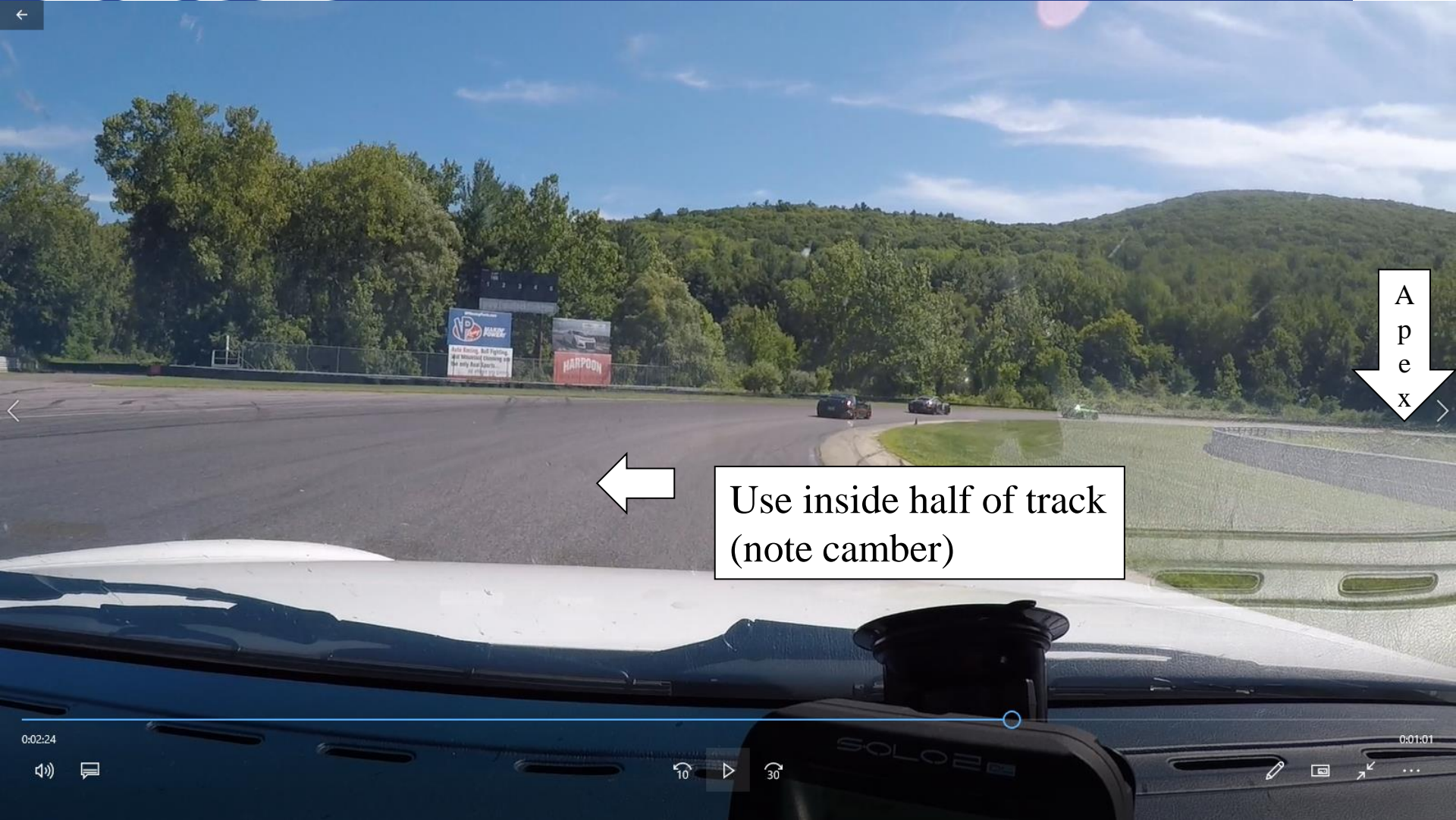
# NNJR Trail off Brakes at/after Apex







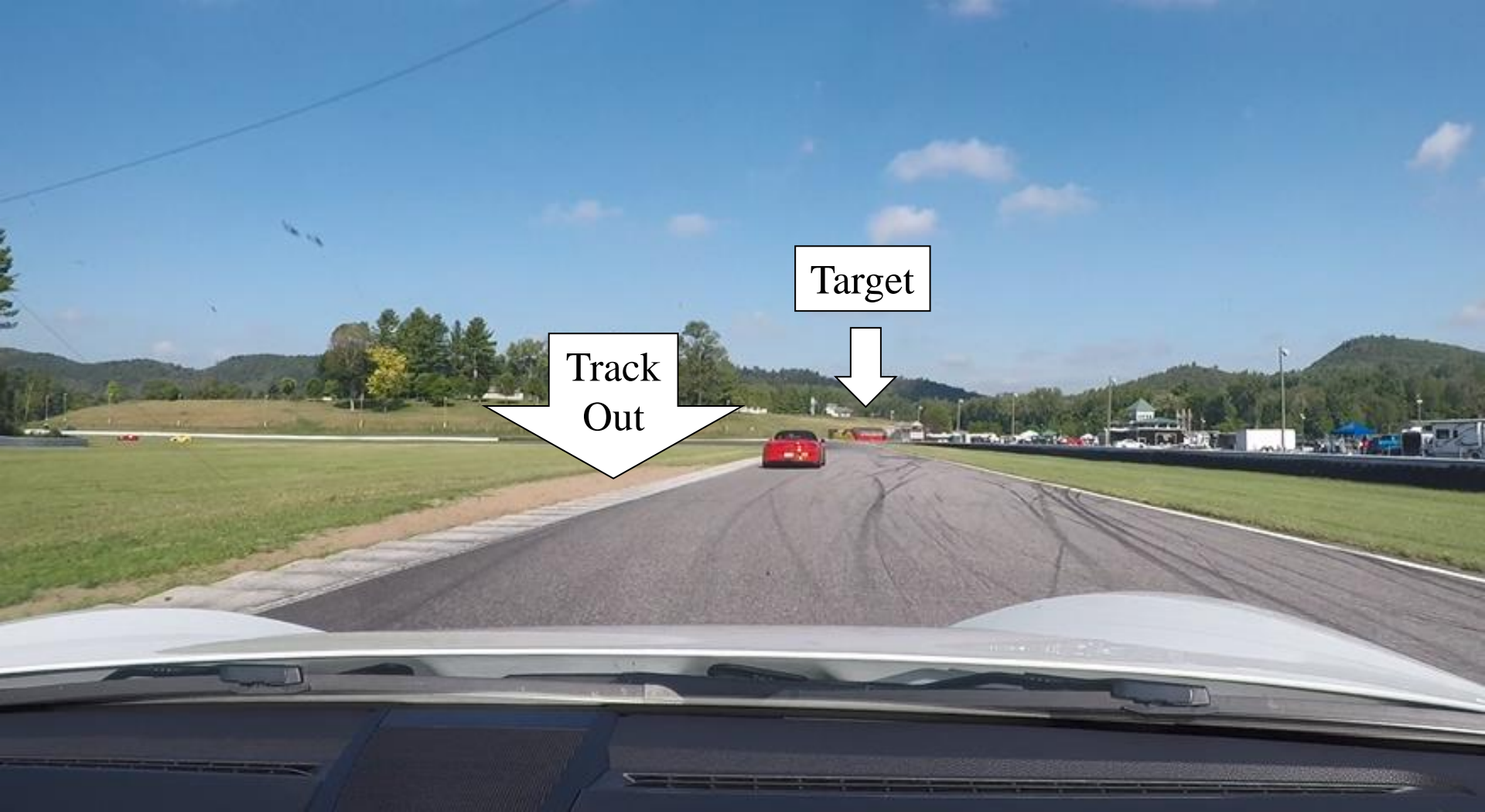




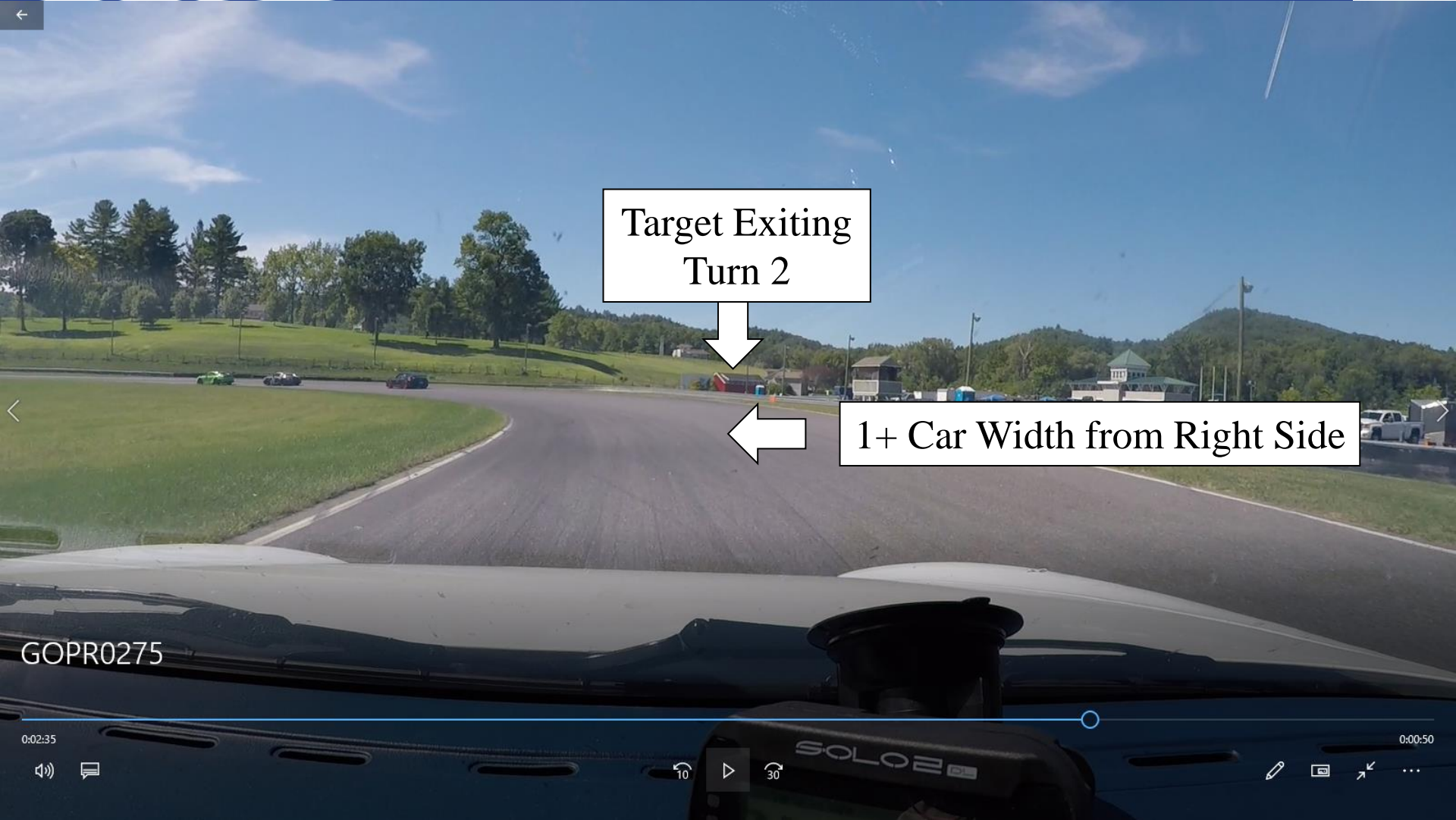
- Avoid early apex!











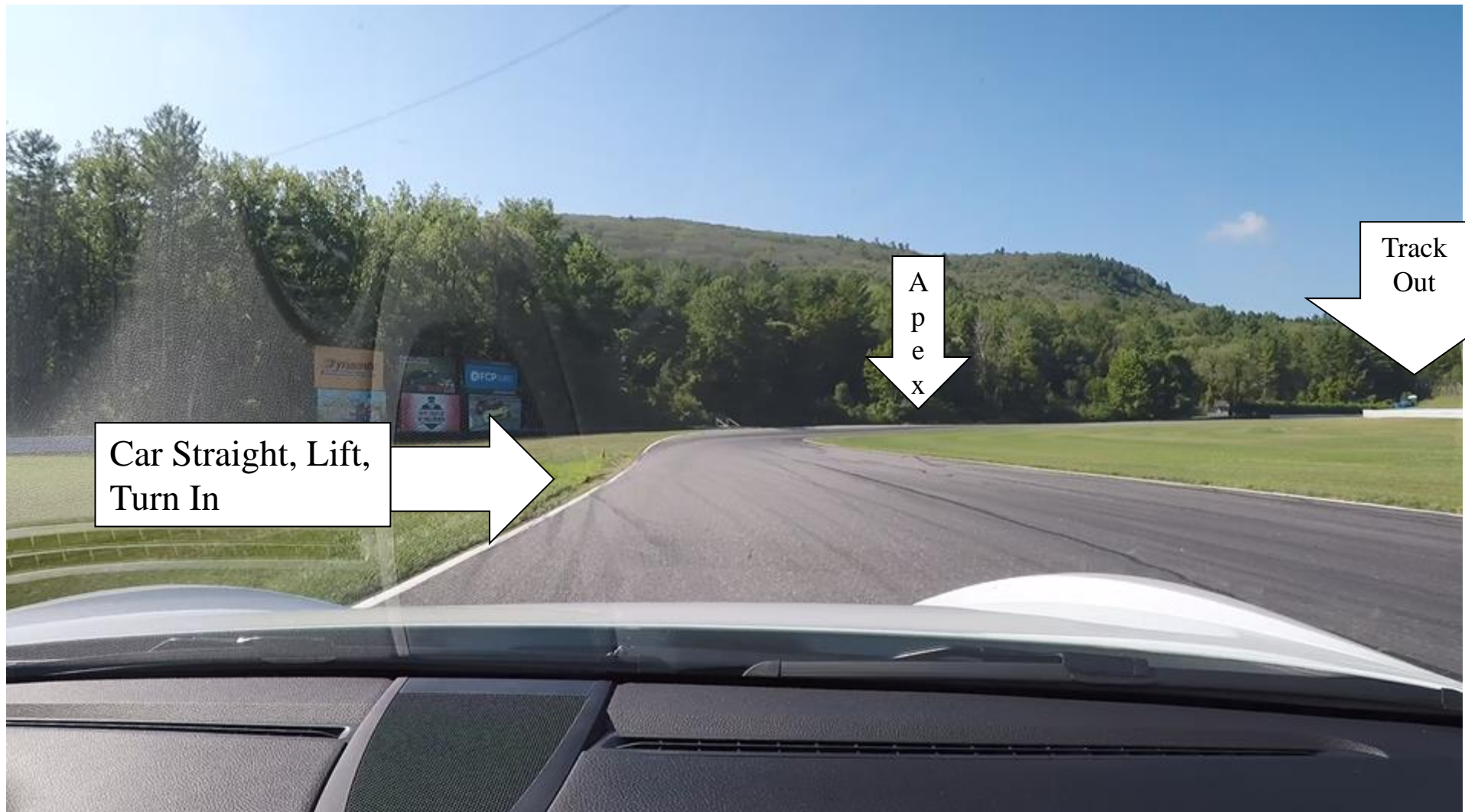


Want car  
straight and  
track left  
here

Easy to be early and/or too fast here!









- Avoid early apex!



# NNJR Uphill: Brake Early



Porsche Club of America

*NNJR Trackside Classroom Copyright 2023*

Slide 16



PORSCHE



# NNJR Smooth Trail After Turn-In



Porsche Club of America

*NNJR Trackside Classroom Copyright 2023*

Slide 17



PORSCHE



# NNJR Uphill: Tight on the Apex Turn In More on Hill; On Gas



Porsche Club of America

NNJR Trackside Classroom Copyright 2023

Slide 18



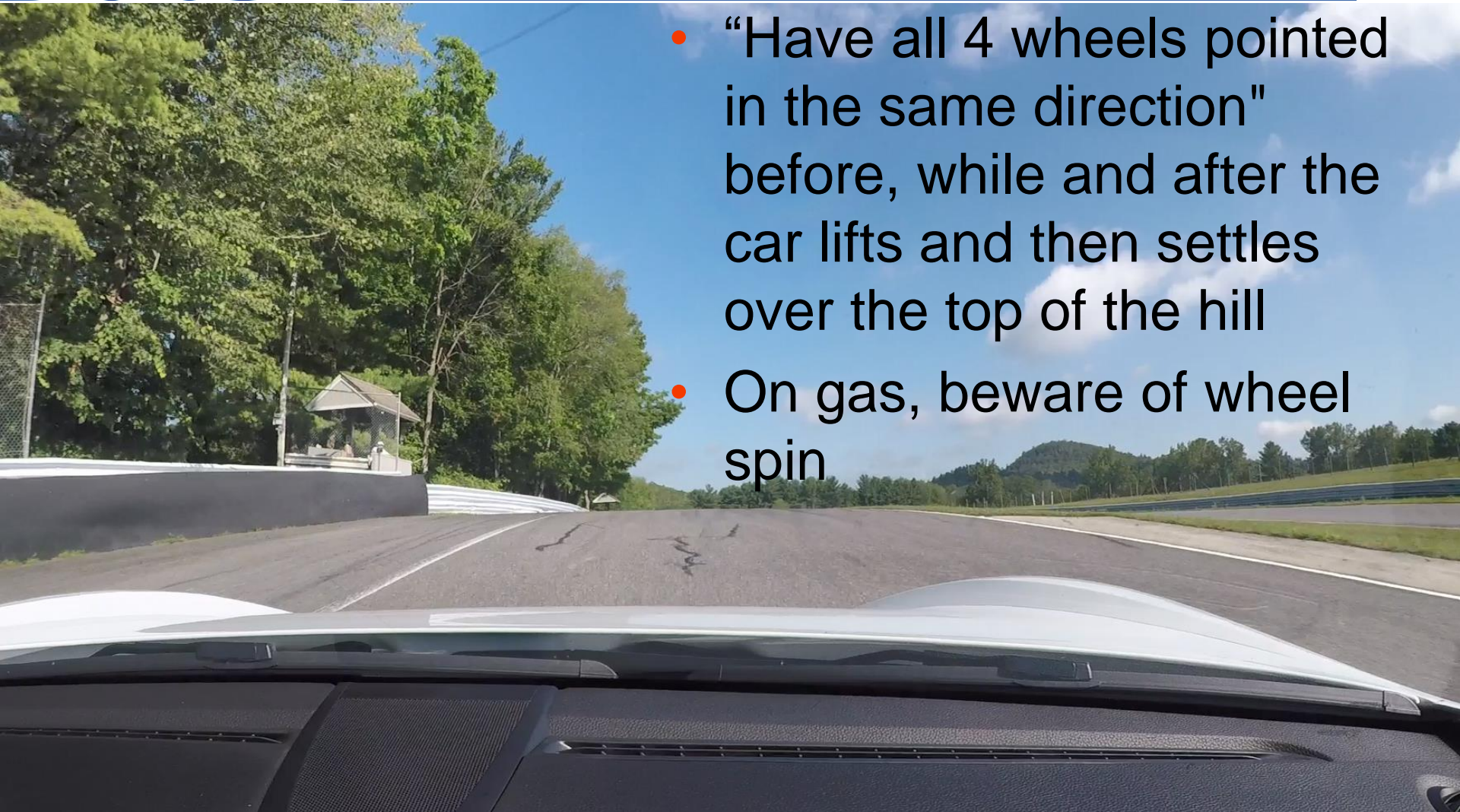
PORSCHE



# NNJR Straight over the Hill



- “Have all 4 wheels pointed in the same direction” before, while and after the car lifts and then settles over the top of the hill
- On gas, beware of wheel spin



Porsche Club of America

NNJR Trackside Classroom Copyright 2023

Slide 19



PORSCHE



# NNJR Cresting the Hill



Porsche Club of America

NNJR Trackside Classroom Copyright 2023

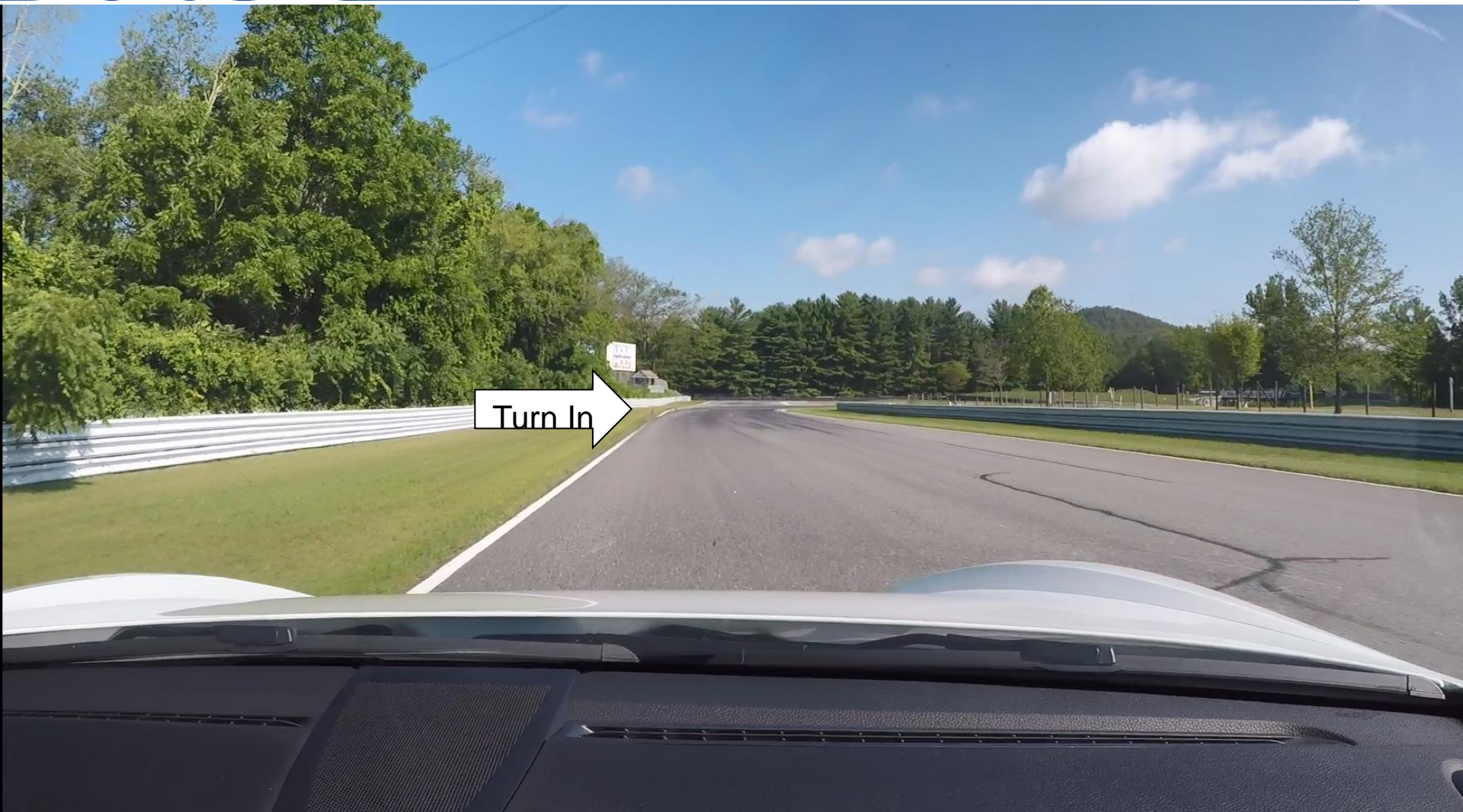
Slide 20



PORSCHE



# NNJR Stay Track Left Until Turn-In Brake in Straight Line



Porsche Club of America

*NNJR Trackside Classroom Copyright 2023*

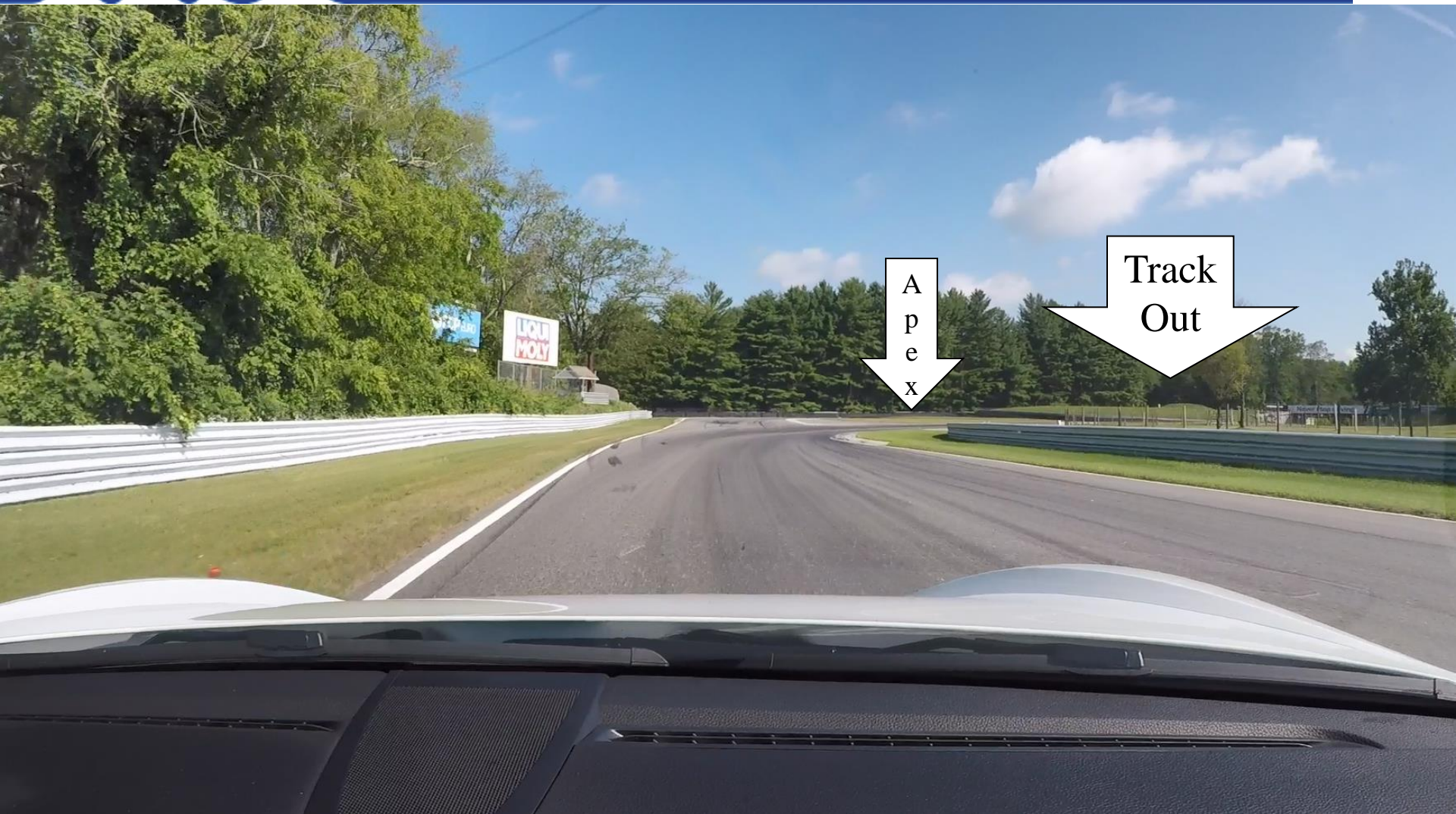
Slide 21



PORSCHE



# NNJR Look thru Apex to Track Out





# NNJR Apex Zone (at the Road)



Porsche Club of America

NNJR Trackside Classroom Copyright 2023

Slide 23



PORSCHE

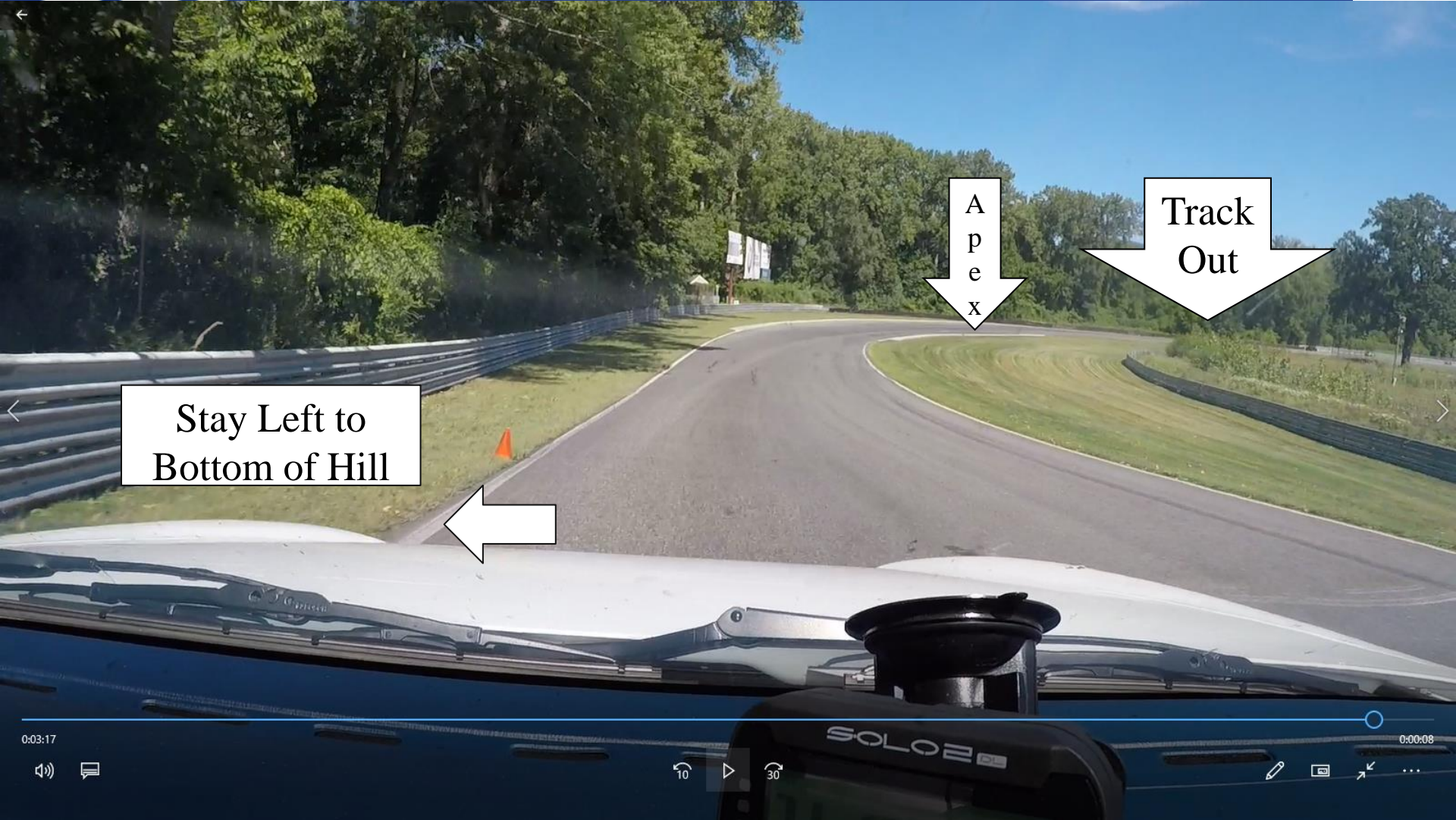


# NNJR Track Left Under Bridge





# NNJR Stay Left to Turn In, Look Ahead Brake in Straight Line





# NNJR Tight on Apex, Look Ahead



Track goes off camber after apex

— Be ready!



Porsche Club of America

NNJR Trackside Classroom Copyright 2023

Slide 26



PORSCHE





- Trail Brake into Big Bend and Left Hander
- Minimal trail brake for other corners
  - Brake early and trail off early for Uphill
  - No trail for West Bend, Downhill
- Avoid early apex
  - Second half of Big Bend, Right Hander
- Watch the adverse camber!
  - Entering NoName, exiting Downhill, Turn 2
- Find good Reference Points that don't move!

