



VIR

Turn by Turn



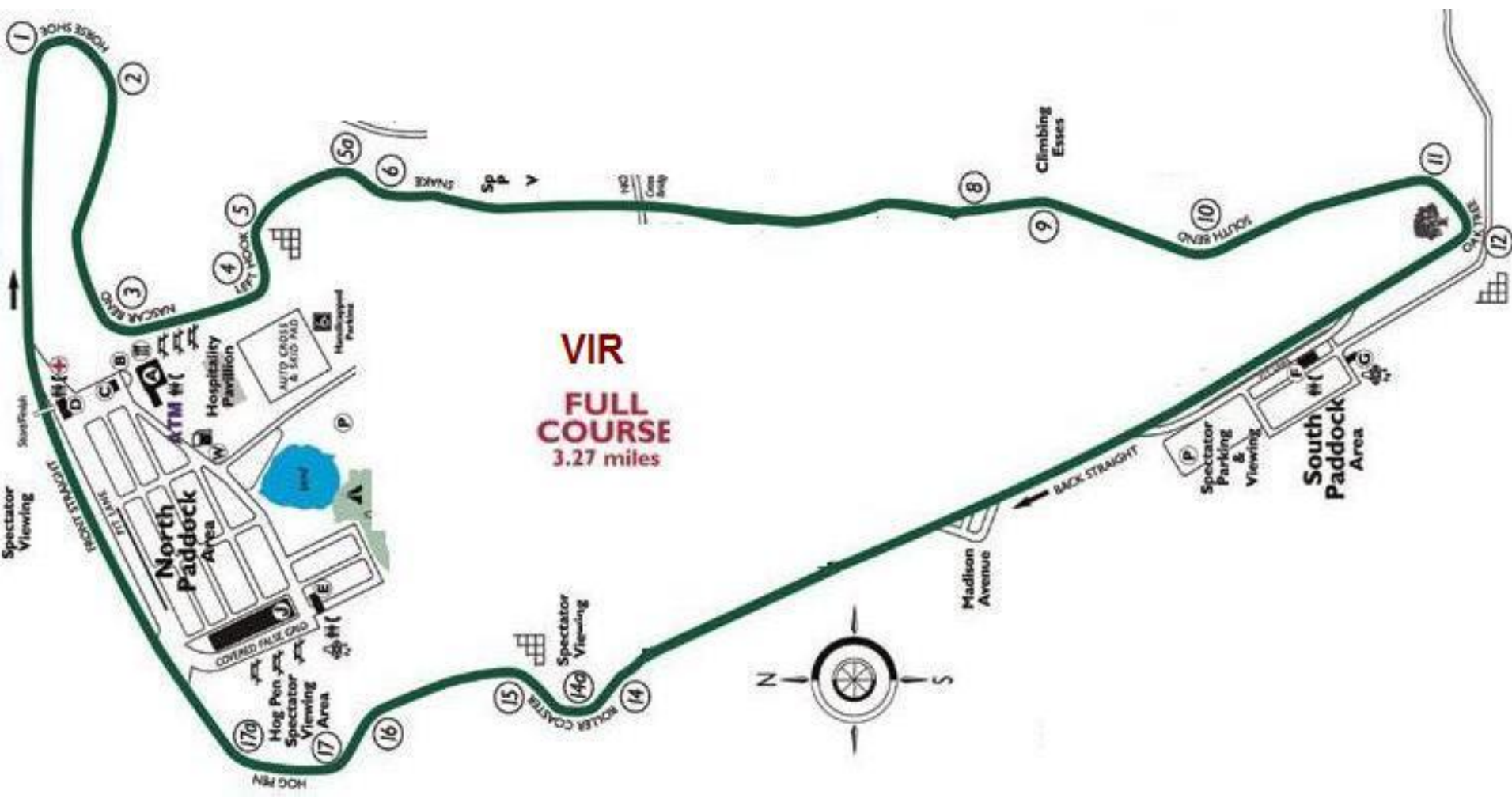


Disclaimer

- *The techniques shown here have been compiled from experienced sources believed to be reliable and to represent the best current opinions on driving at VIR. But they are advisory only. Driving at speed at VIR, or any other track, requires skill, judgment and experience. These techniques assume the reader has high performance driving knowledge and applies them as applicable to their level of driving experience.*
- *High-performance driving can be very dangerous, carries inherent risks and may result in injury or death. NNJR and PCA make no warranty, guarantee or representations as to the absolute correctness or sufficiency of any representation contained herein. Nor can it be assumed that all acceptable safety measures are contained herein or that other or additional measures may not be required under particular or exceptional conditions or circumstances.*



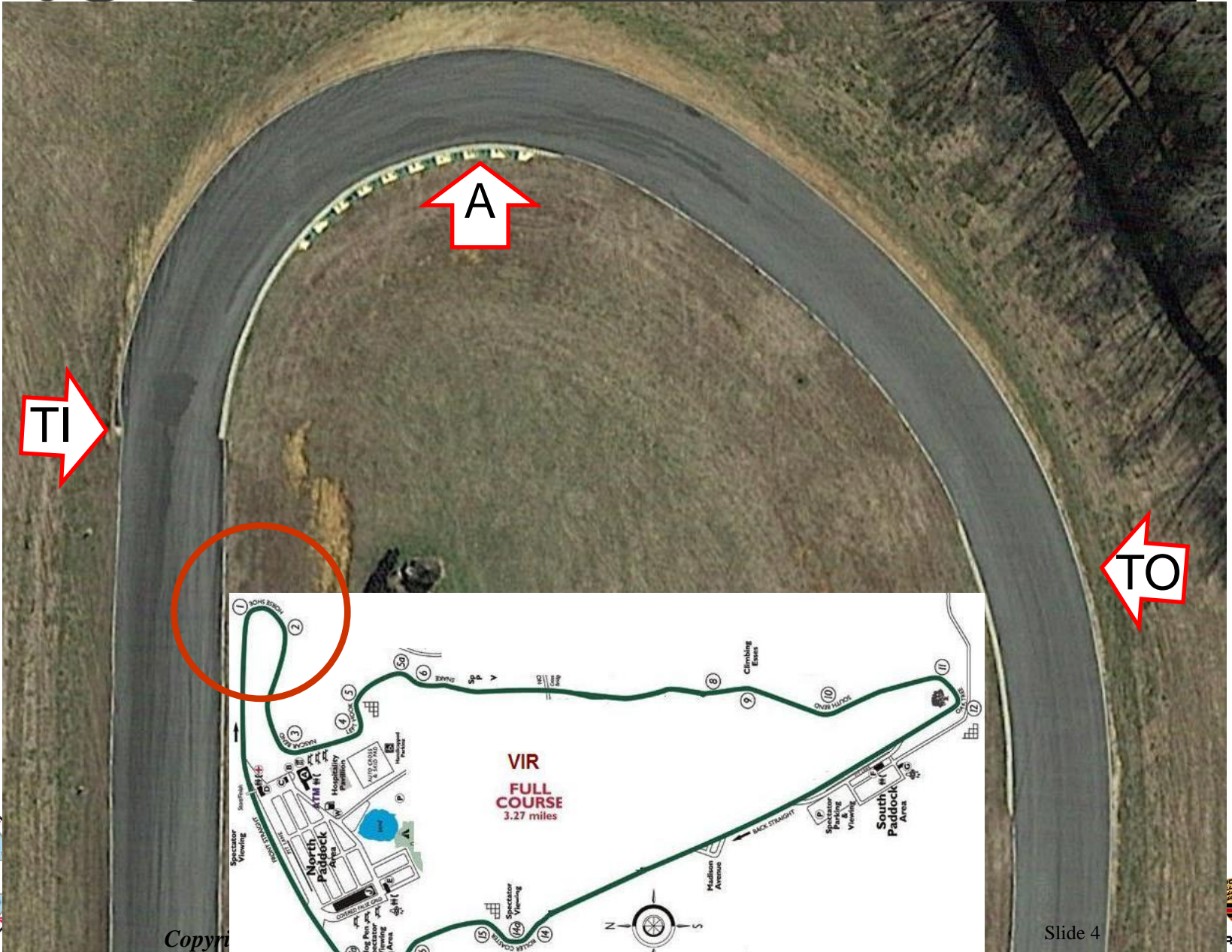
NNJR VIR 3.27miles



VIR
FULL COURSE
3.27 miles



NJR Turn 1



Copyri



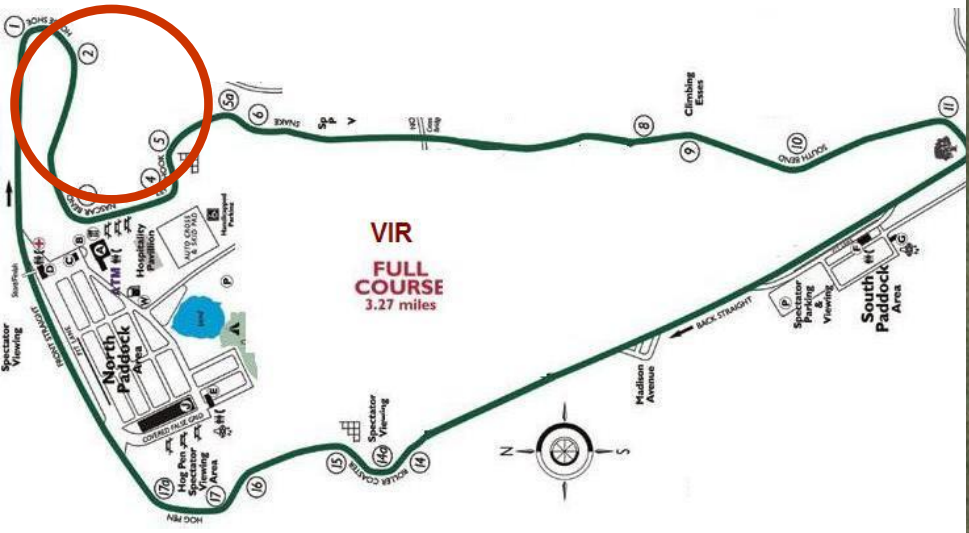








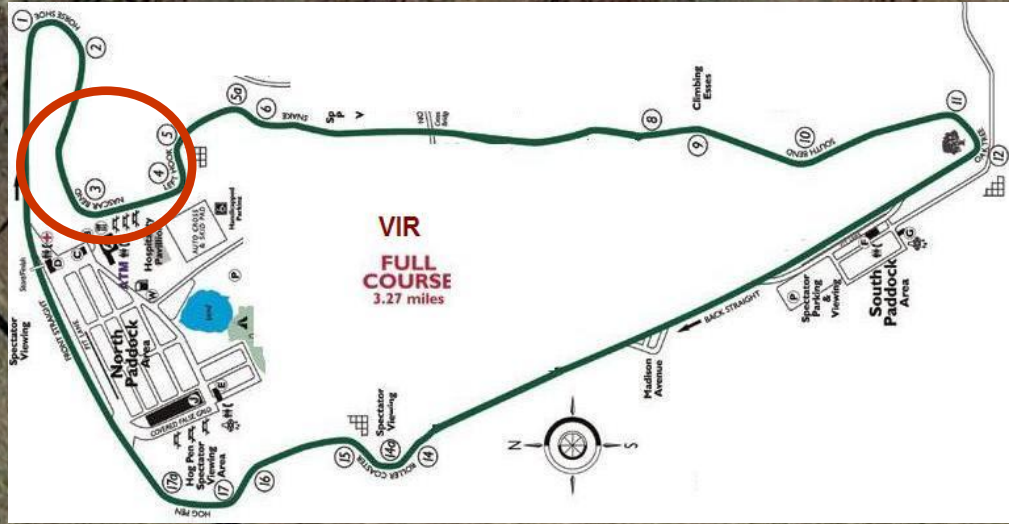
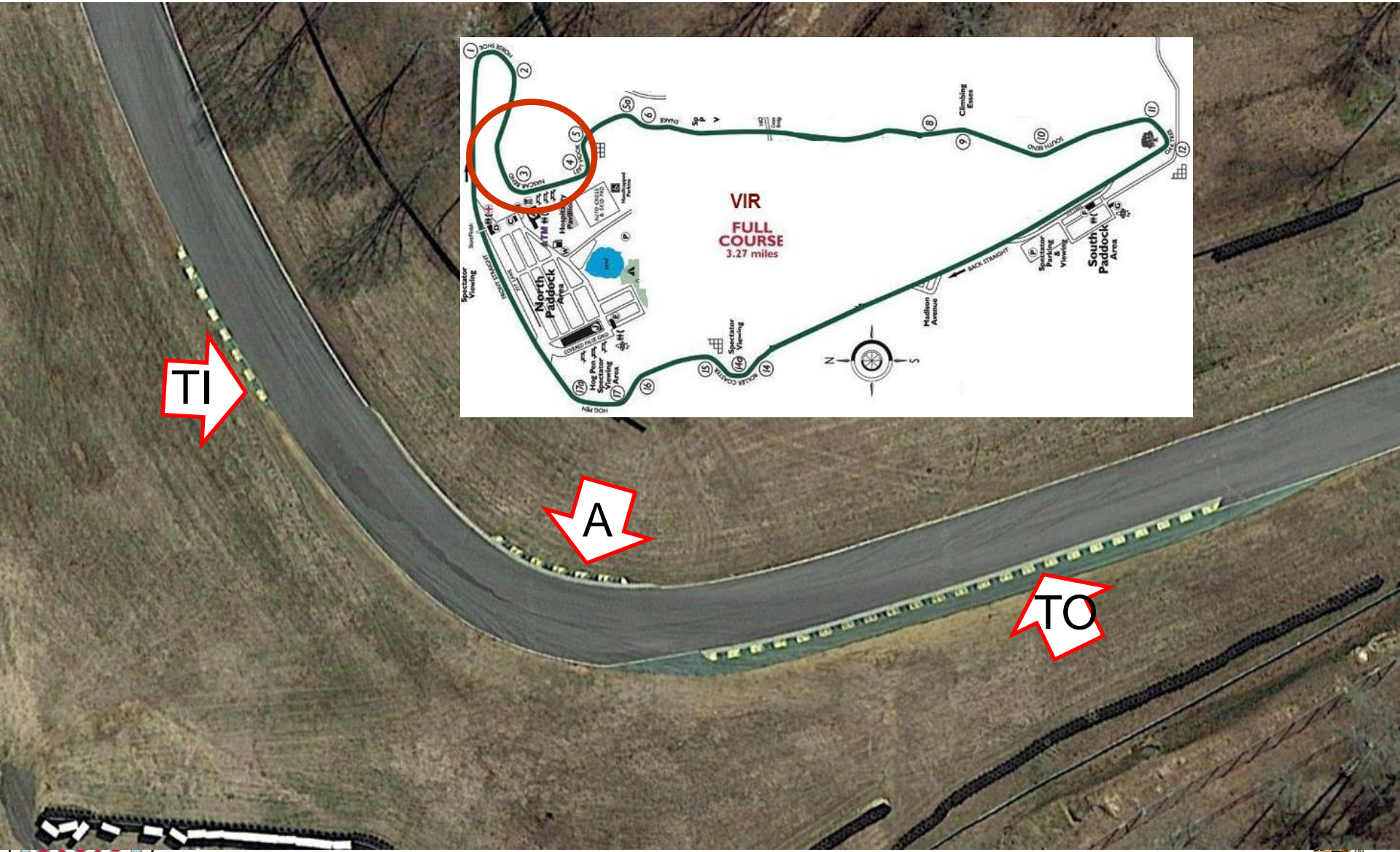
Turn in when you see the Tech Barn







NNJR Turn 3: NASCAR





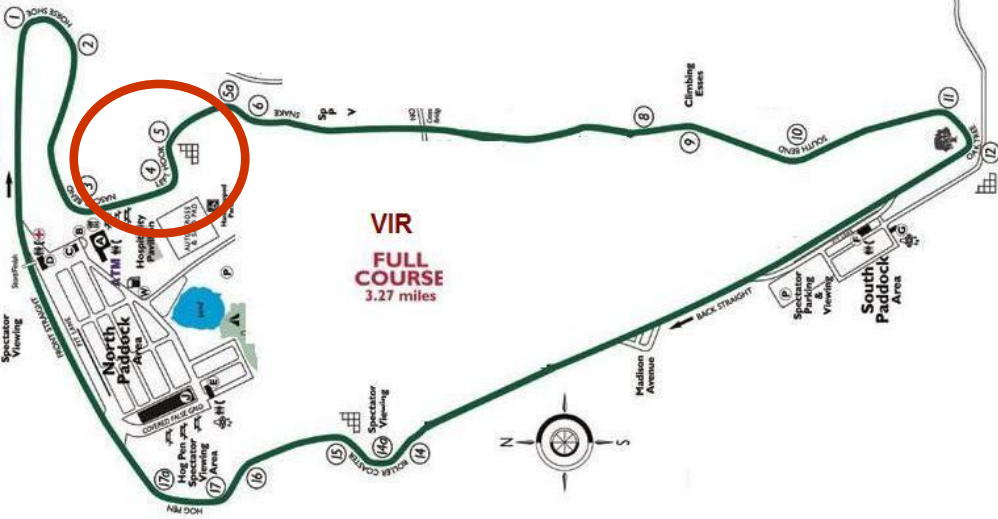
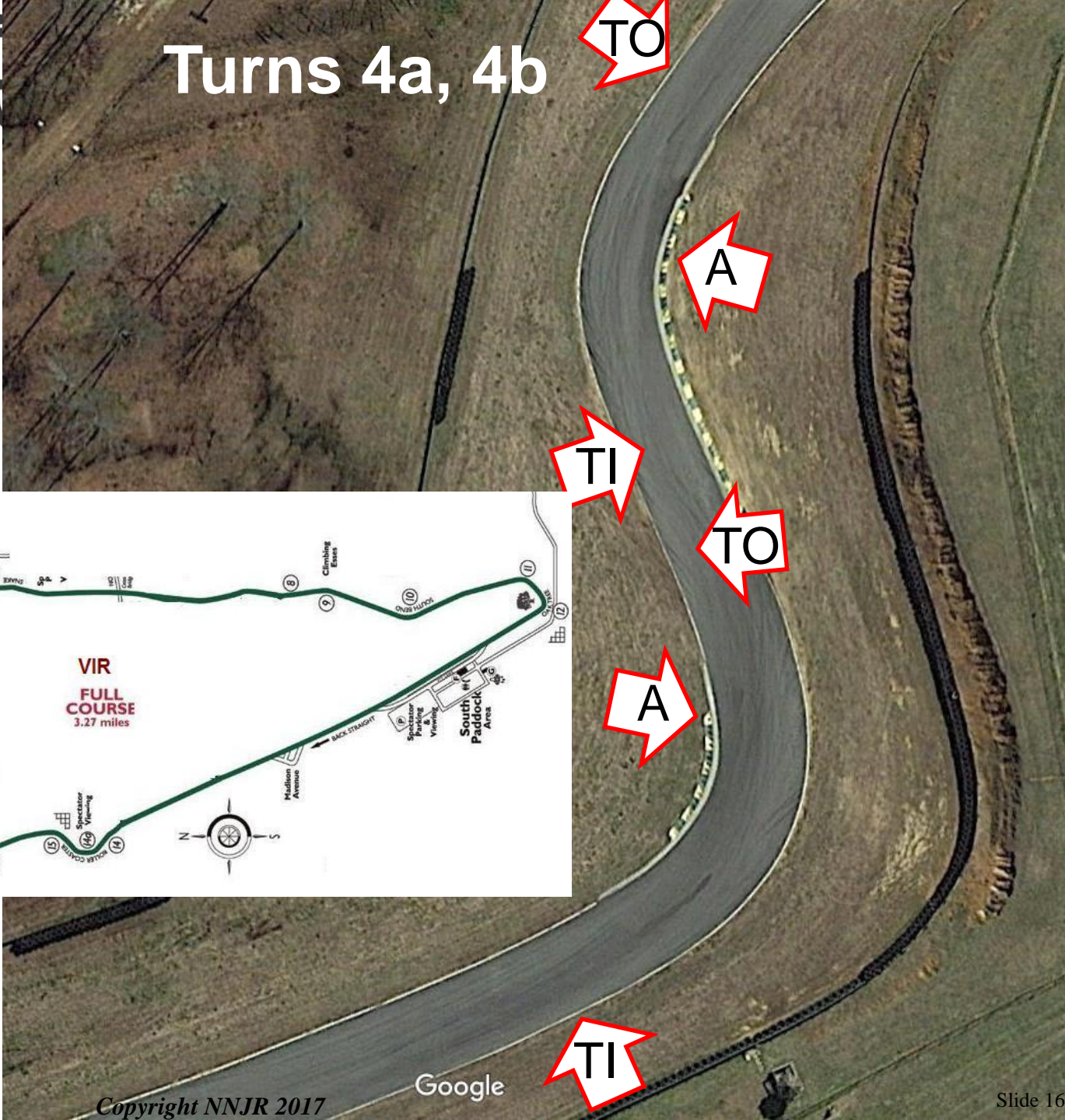






Turns 4a, 4b

TO



TI

TO

A



Google

TI





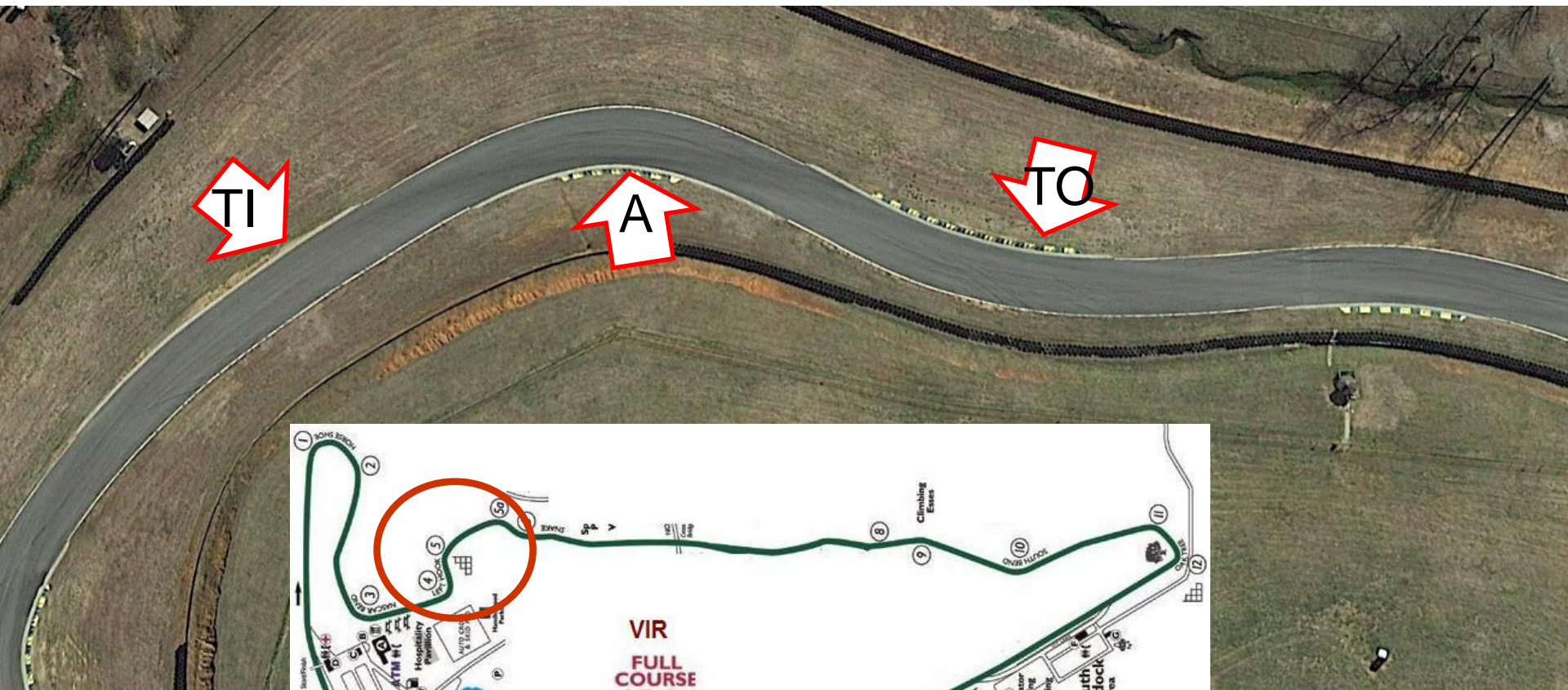
NNJR







NNJR Turns 5a, 5b



Copyright NNJR 2017

Slide 21











NNJR Climbing Esses: Entry is Critical





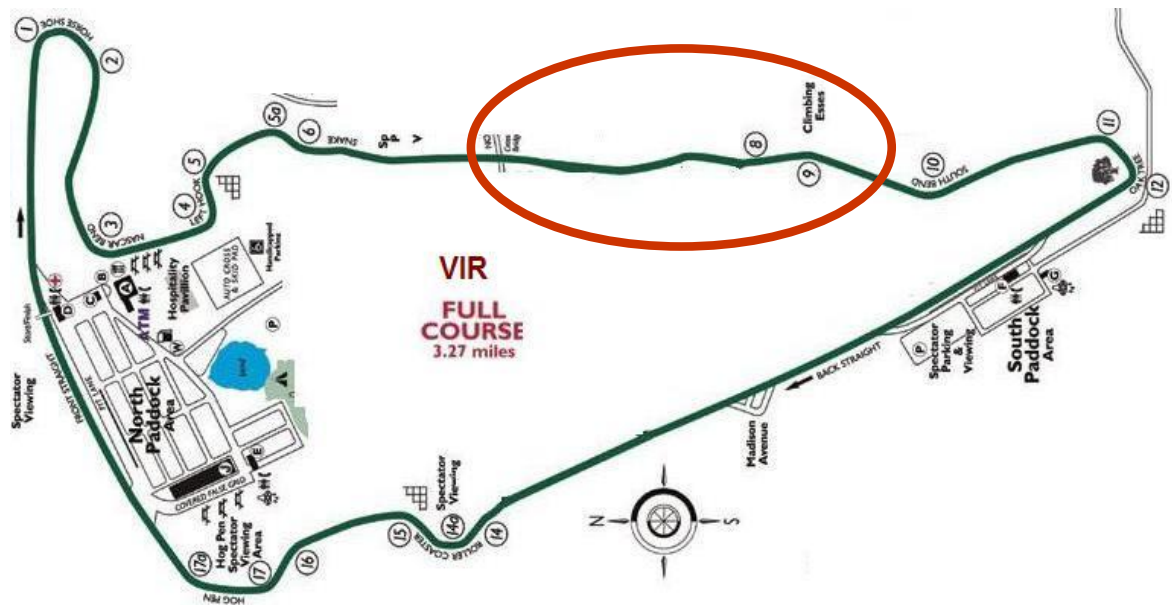








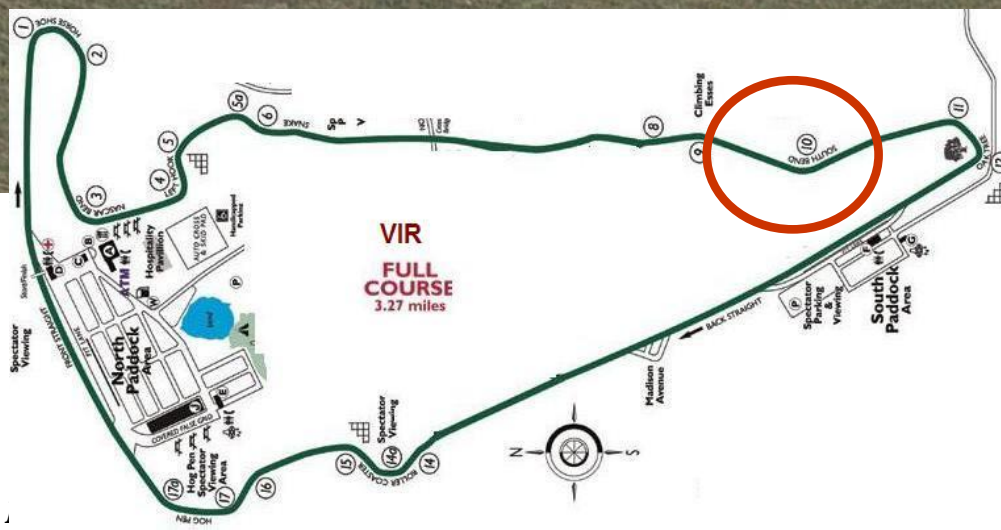
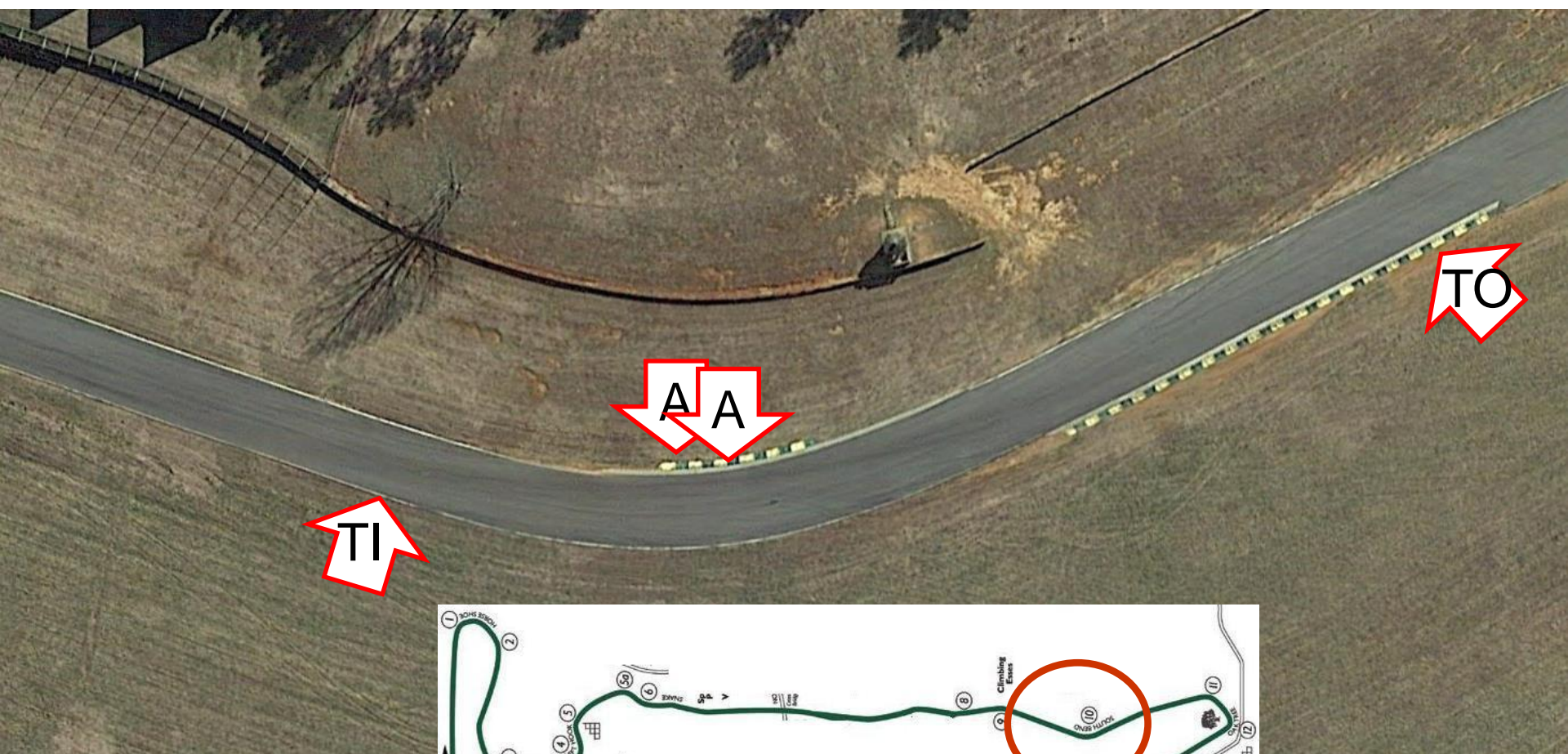
NNJR Climbing Esses







NJR Turn 10



Copyright

Slide 35



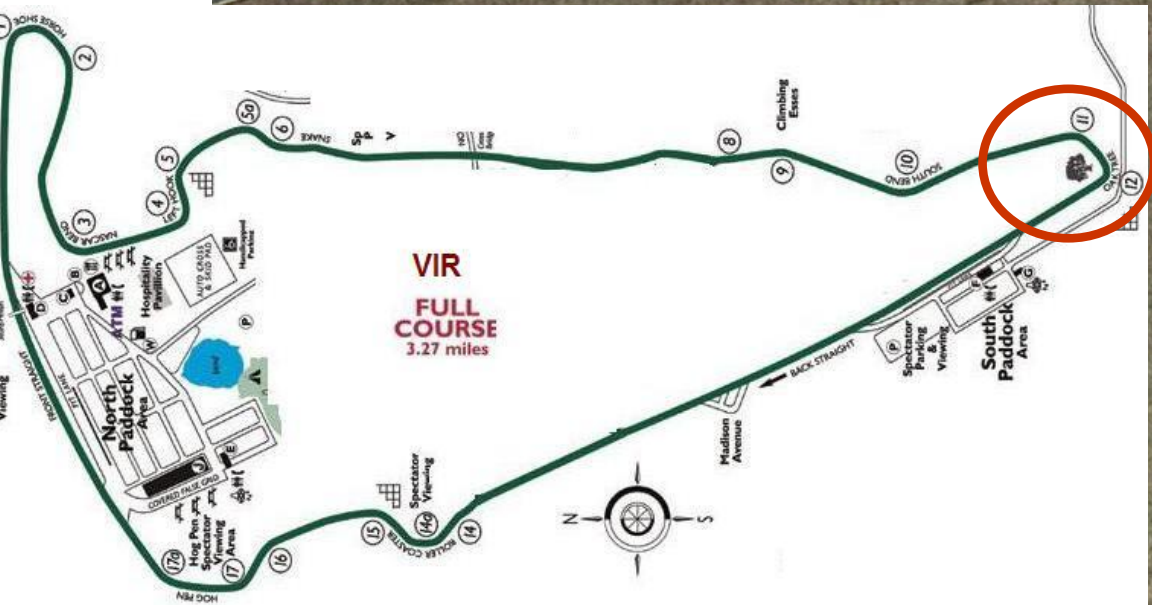
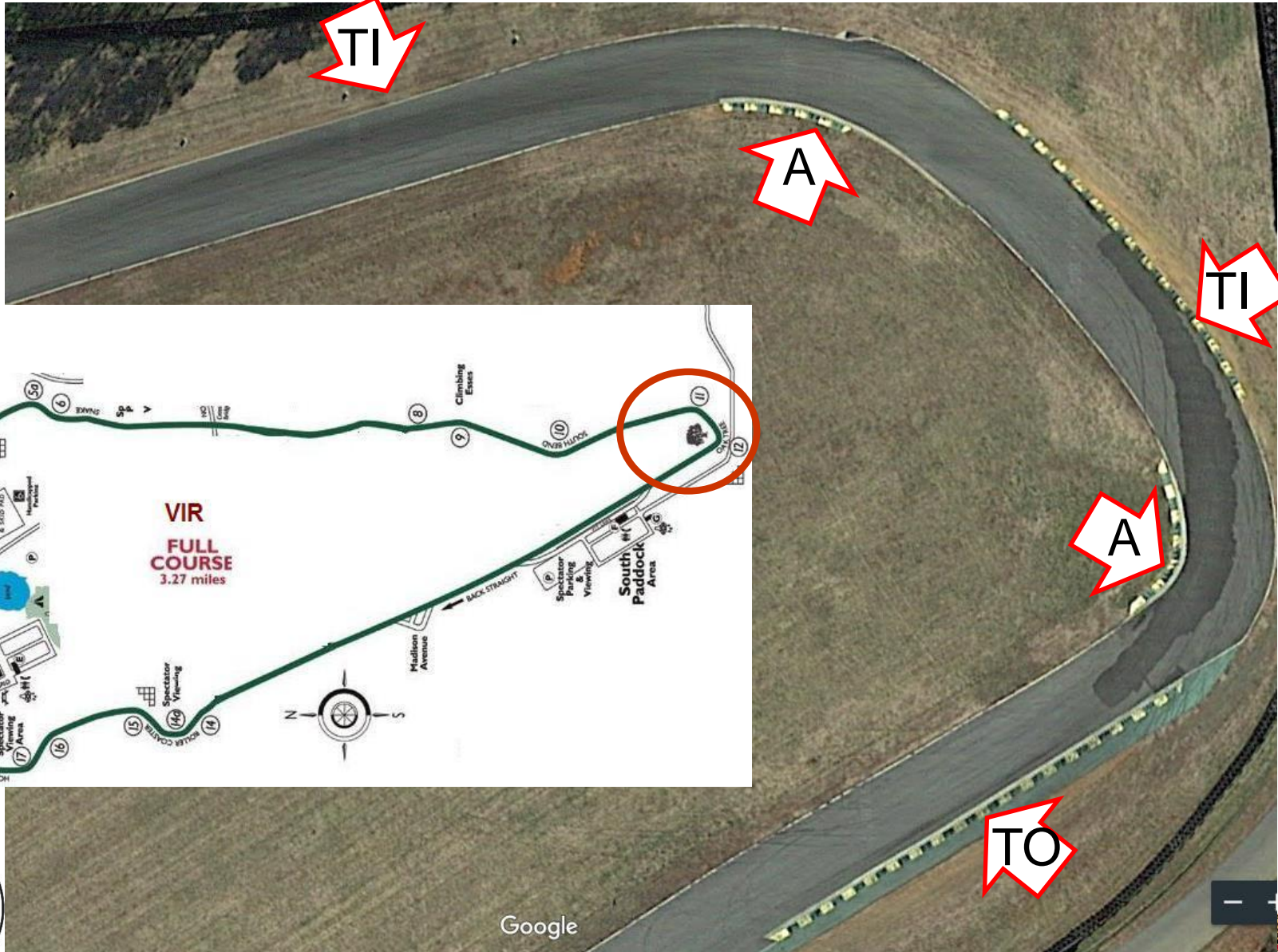








NNJR Oak Tree: Turns 11-12



Google







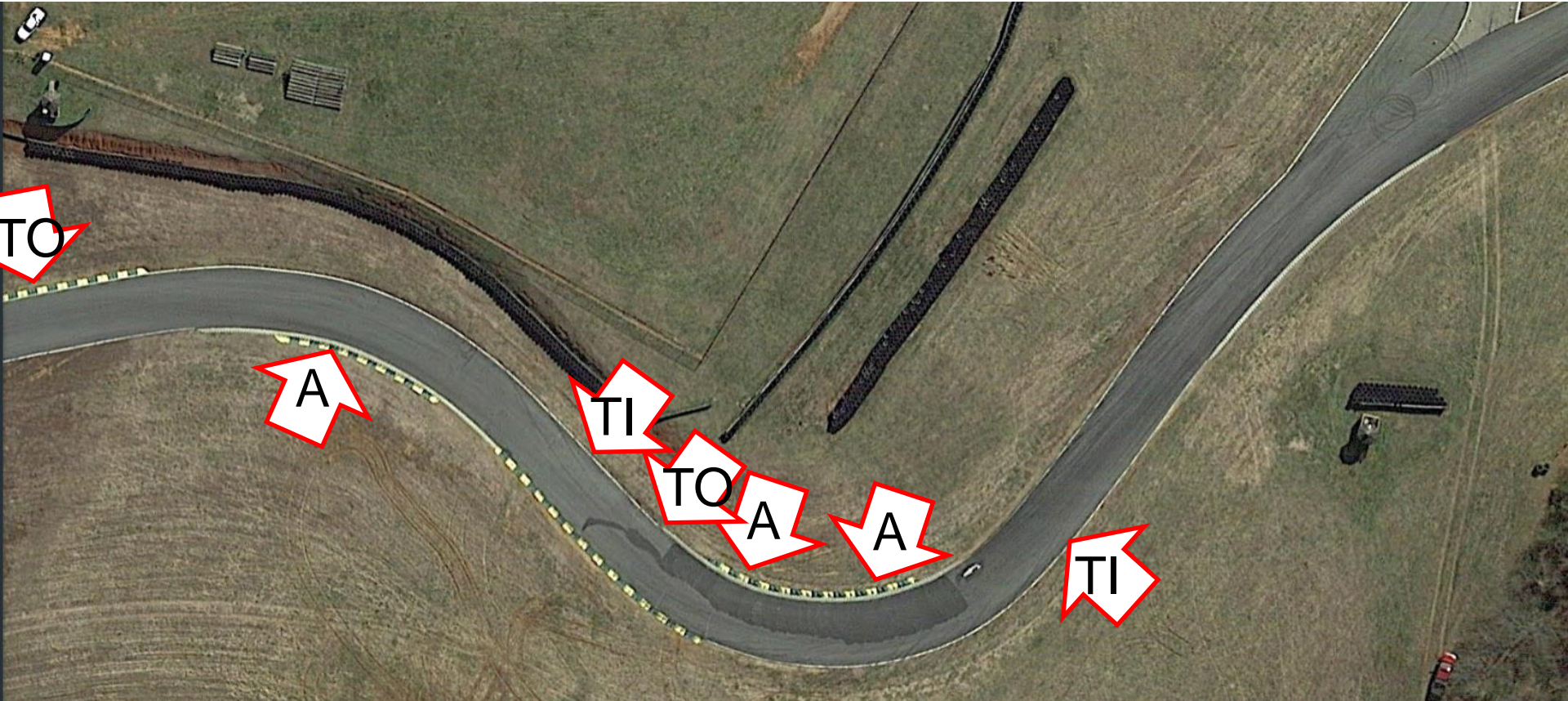








NNJR Turns 14-15







NNJR





NNJR

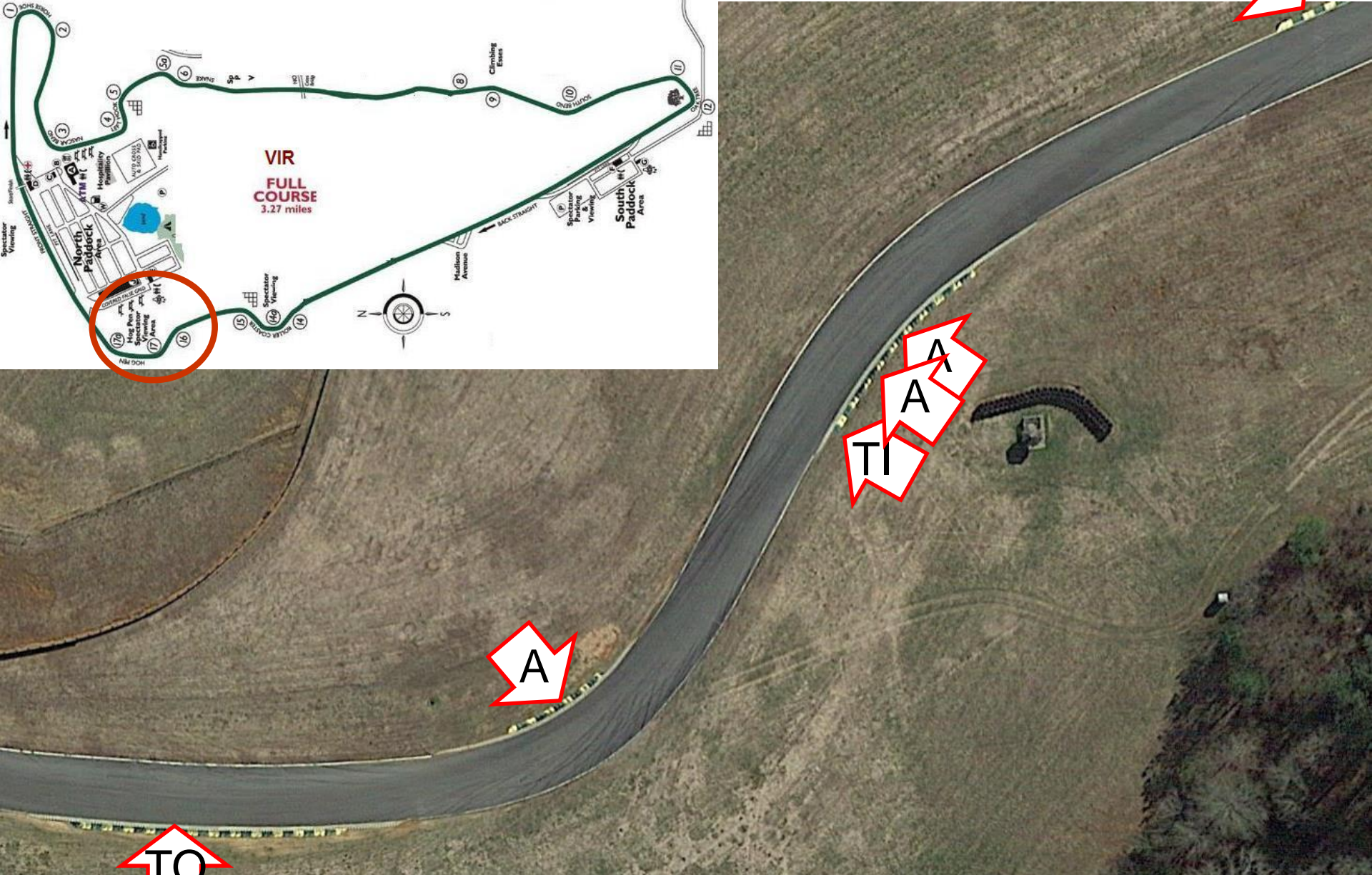
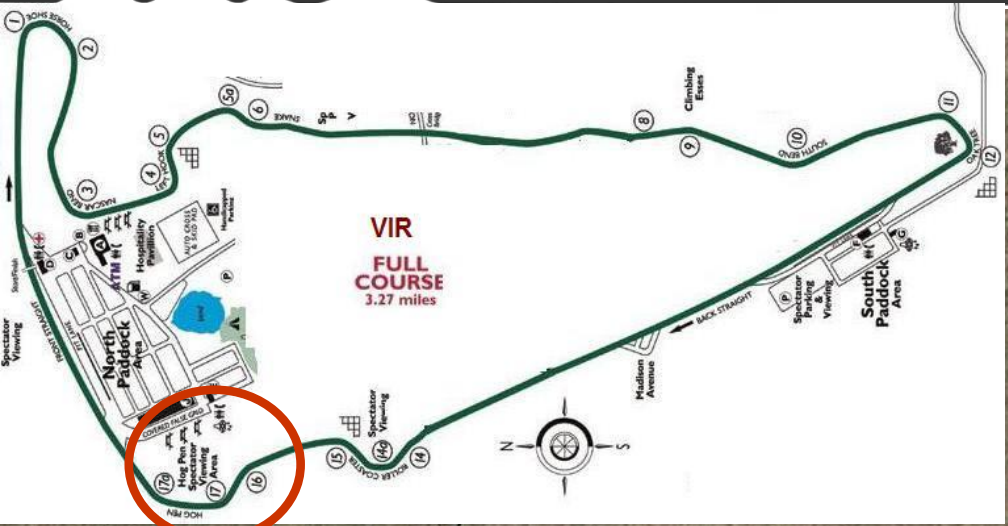




NJR



NNJR Turns 16a-16b

















- Turn 1 is slower than it looks!
 - So is Oak Tree
- Easy to overdrive Turn 4
- Turn 10 (South Bend) deserves great respect

